



AMK Commercial Series

CS615-70-W

CABINET SPEAKER SYSTEM

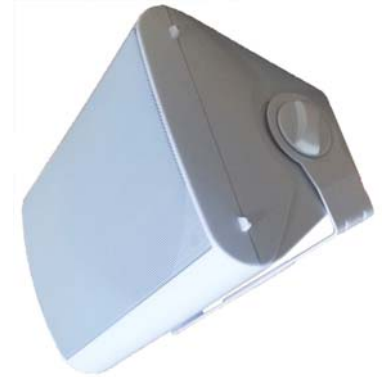


The AMK CS615-70-W is a coaxial speaker cabinet speaker system. The speaker, a full range, low distortion, transducer is one of only a few that, though designed for overhead applications in the commercial sound industry, produces audio quality that is equally at home in the demanding world of extended sound fields and recording studios as well.

Excellent dispersion, wide bandwidth, and a smooth frequency response make this the top choice for overhead commercial applications.

There are wide ranges of applications of this unit including extending the sound field to where ceiling speakers are not appropriate or desired.

There are wide ranges of application for this product where wall mount speaker is desired. (I.e., Education, airports, hospitality, corporate boardrooms...etc)



Transducer Specifications	
Frequency Response	65 Hz - 20 kHz
Transformer	70Volt. (15W, 10W, 5W, 2.5W)
Power Handling	25 watts
Sound Pressure level (1w/1m)	91 dB
Voice-coil diameter	1"
Average Beamwidth @ 2 kHz	144 deg.
Magnet Weight	13 oz
Magnet Material	Barium Ferrite
Tweeter	13mm Polyamide Soft Dome
Woofer Cone	Polypropylene
Surround Material	Inverted Rubber
Crossover Frequency	6.3 kHz

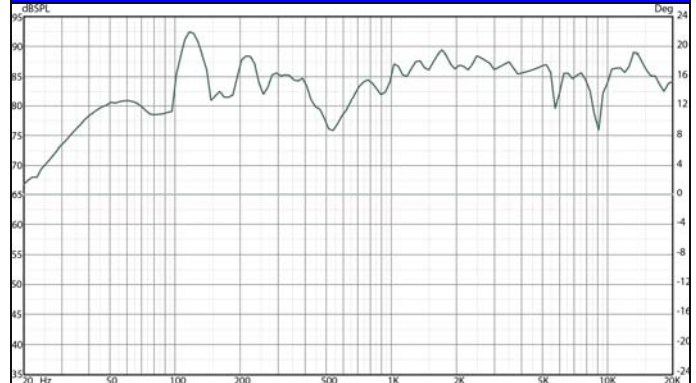
Enclosure Specifications	
(Enclosure listed under UL 94)	
Enclosure	Acrylonitrile Butadiene Styrene (ABS)
Color	White
Height	12"
Width	9"
Depth	7"
Bracket	Metal U bracket with screw knob on the side and electro welded insert for omni mount on rear plane.
Grille	Perforated Metal

FEATURES

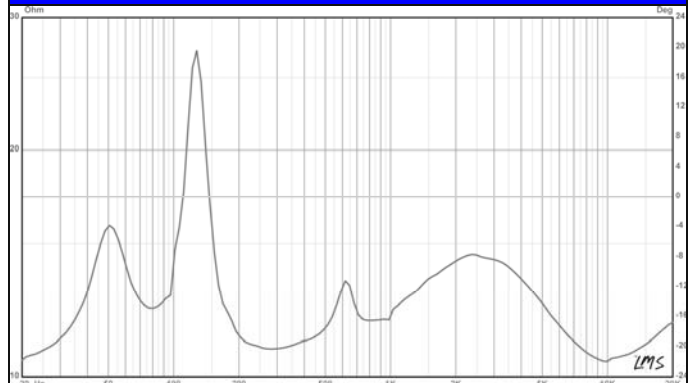
- * Plastic Enclosure Type with perforated metal grill
- * High performance 6½" coaxial loudspeaker with wide dispersion
- * Wide choice of input and control configurations

Speaker ships with U bracket, omni directional bracket is available at nominal amount.

FREQUENCY RESPONSE



IMPEDANCE CURVE



Illustration

2 Screw position for optional AMK's universal mount bracket, SB35B

Input selector switch. For CS615-70

Terminal block screws for line level audio.

Bracket Options



The unit comes with U-bracket with easy adjustment screw knobs on each side.



SB 35

Optional Universal Mount Bracket

Architect's & Engineer's Specifications

The powered loudspeaker system shall be **AMK CS615-70-W**. The speaker driver assembly in the system shall be of the coaxial type with an 6.5" woofer of polypropylene, an inverted rubber surround, and a 1" polyamide soft dome, post mounted, tweeter.

The transducer in the loudspeaker system shall be AMK CX 602 coaxial loudspeaker. The woofer shall have a 13 oz. (369g) Barium Ferrite magnet. The two reproducer sections shall be coupled through a built-in capacitor bypass crossover. The crossover frequency shall be at 5.0 kHz. The low frequency reproducer shall have 1" (25.4mm) voice coil and the high frequency reproducer shall have 0.51" (13mm) voice coil.

The system shall have a frequency response of 65 Hz- 20 kHz (+/- 5dB). The power handling shall be 25watts at 8 ohm impedance. The sensitivity shall be 91dB at 1watt / 1meter.

The system shall have tap wires in the back of the speaker that shall have selections of 15W, 10W, 5W, and 2.5W, for 70.7volts. The system shall have a frequency response of 65Hz-20kHz (+/- 5dB). For CS615, the power handling shall be 25watts at 8 ohm impedance.

The enclosure shall be constructed of high-impact ABS. The grille shall be completely powder coated for resistance against rusting, shall be bake-painted white.

The installation shall be done with U bracket provided with the cabinet with plastic knob screw on the side of the cabinet. Optional AMK SB-35 multi directional bracket may be used for installation as well.

The total weight of the unit system shall not exceed 7.0 lbs.

The loudspeaker system shall be AMK Innovations model **CS615- CS615-70-W**.